

SCREW/WING NUT

GHIERA A FARFALLA/ACCIAIO
WING NUT/STEEL
FLÜGELMUTTERHÜLSE/STAHL
ECROU PAPILLON/ACIER

Caratteristiche tecniche I

- Intercambiabilità: Parker/Snap-Tite 75
- Occlusione: valvola
- Aggancio: a vite
- Materiale: acciaio
- Finitura acciaio: Zn-Fe (Cr III)
- Filettature: BSP - NPT
- Guarnizioni standard: NBR
- Temperatura d'esercizio: -25 °C +100 °C
- Guarnizioni opzionali: FKM, EPDM o altro
- Pressioni di esercizio: 350 bar
- Connessione in pressione: consentita (lato maschio o lato femmina)

Technical data E

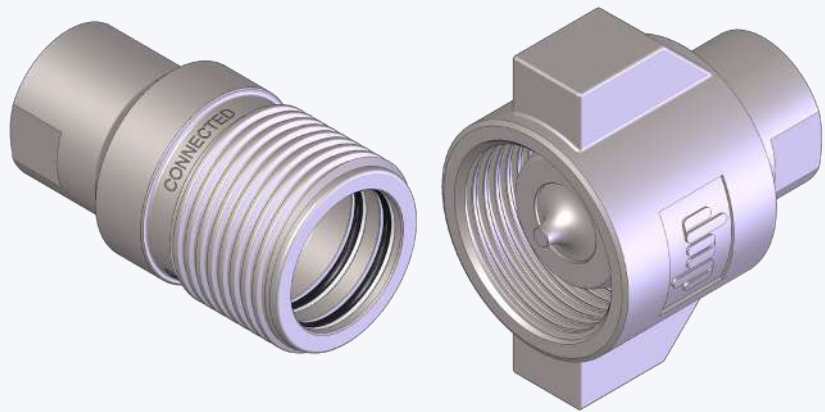
- Interchange: Parker/Snap-Tite 75
- Occlusion: poppet
- Locking: screw
- Material: steel
- Steel finishing: Zn-Fe (Cr III)
- Threads: BSP - NPT
- Standard seals: NBR
- Working temperature: -25 °C +100 °C
- Optional seals: FKM, EPDM or more
- Working pressure: 350 bar
- Connection under pressure: allowed (both male or female side)

Technische Merkmale D

- Austauschbarkeit: Parker/Snap-Tite 75
- Verschluss: ventil
- Kupplung: Schraubweise
- Werkstoff: Stahl
- Stahl Ausführung: Zn-Fe (Cr III)
- Gewinde: BSP - NPT
- Standard-Dichtungen: NBR
- Betriebstemperatur: -25 °C +100 °C
- Dichtungen nach Wahl: FKM, EPDM, usw.
- Betriebsdruck: 350 bar
- Kuppeln unter Druck: erlaubt (Steckerseite oder Muffeseite)

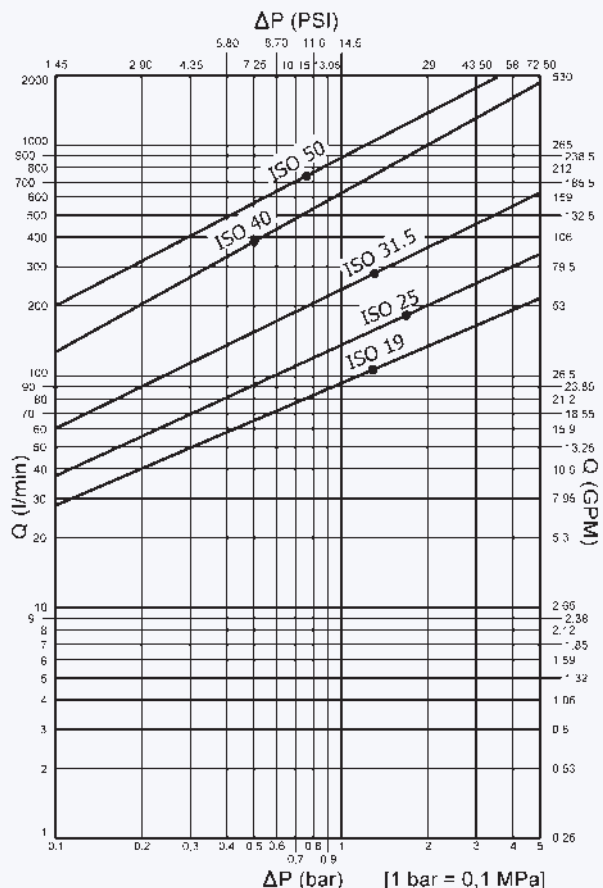
Caracteristiques techniques F

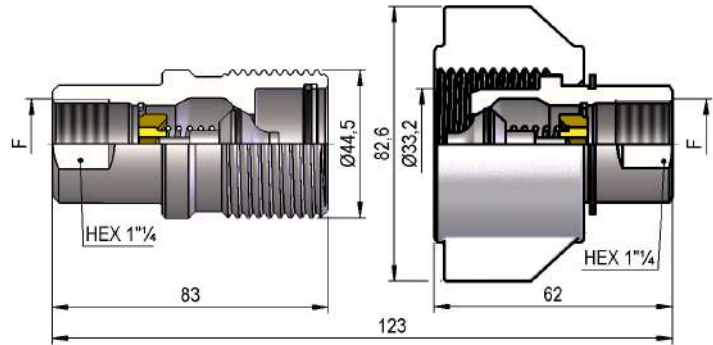
- Intercambiabilité: Parker/Snap-Tite 75
- Obturation: clapet
- Accrochage: a vissé
- Matériel: acier
- Traitement acier: Zn-Fe (Cr III)
- Taraudage: BSP - NPT
- Joints standard: NBR
- Température de service: -25 °C +100 °C
- Joints facultatifs: FKM, EPDM, ect.
- Pression de service: 350 bar
- Connexion sous pression: possible (côté male ou femelle)



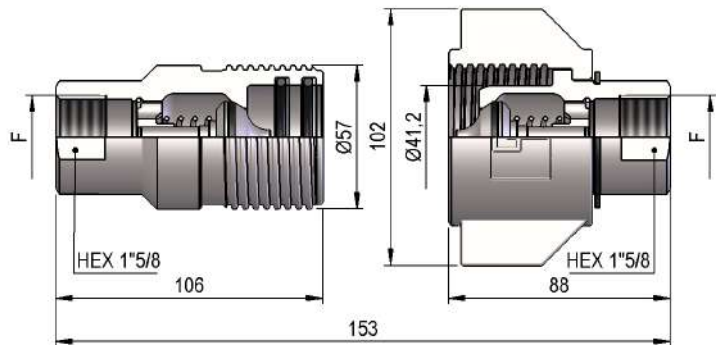
Nominal size				Max working pressure	Rated flow	Max flow rate	Min burst pressure			Fluid spillage
DNP	BG	ISO	mm				Male	Female	Coupled	
20	4	19	17	35	106	190	75	140	150	8
25	5	25	22	35	189	280	90	150	160	16
30	6	31.5	27	35	288	480	85	160	130	31
39	7	40	34	35	379	700	60	90	120	64
50	8	50	47	35	757	1000	50	60	110	141

1 MPa = 145.04 psi • 1 l = 0.264 gal

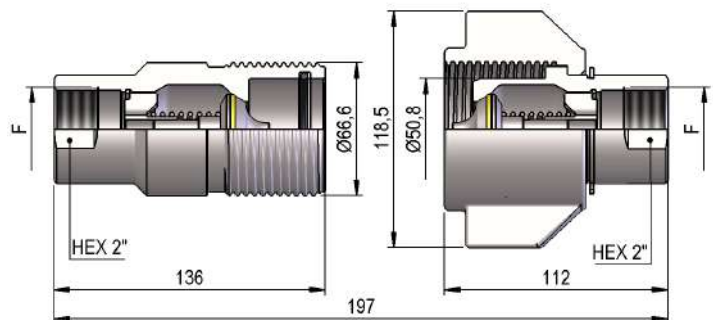


VFH1 DN20 - BG 4 - ISO 19


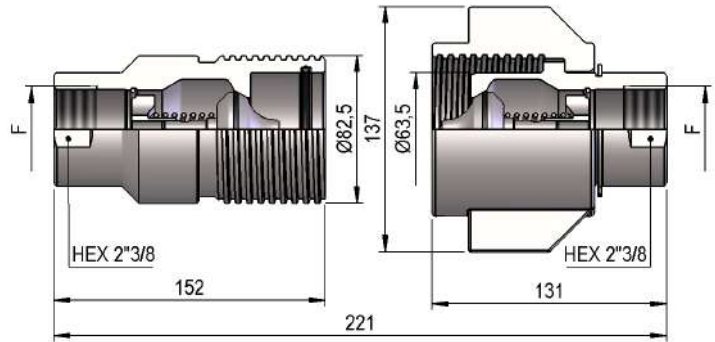
F	STANDARD	FEMMINA - FEMALE - MUFFE - FEMELLE			MASCIO - MALE - STECKER - MALE		
		COD. F	Weight (g)	Packaging (pcs.)	COD. M	Weight (g)	Packaging (pcs.)
BSP 3/4"	DIN 3852-2-X	VFH1.2019.002	475	28	VFH1.2019.003	835	12
NPT 3/4"	ANSI B1.20.3	VFH1.2019.012	480	28	VFH1.2019.013	840	12

VFH1 DN25 - BG 5 - ISO 25


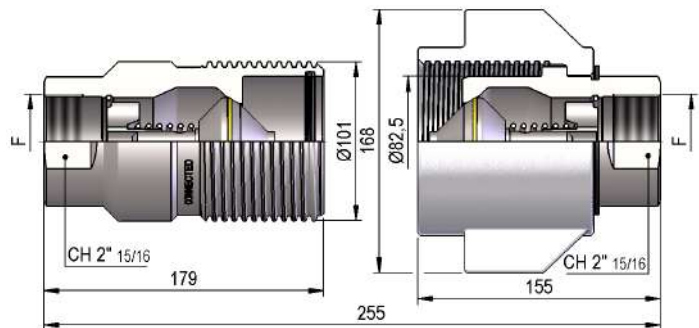
F	STANDARD	FEMMINA - FEMALE - MUFFE - FEMELLE			MASCIO - MALE - STECKER - MALE		
		COD. F	Weight (g)	Packaging (pcs.)	COD. M	Weight (g)	Packaging (pcs.)
BSP 1"	DIN 3852-2-X	VFH1.2525.002	1036	15	VFH1.2525.003	1438	8
NPT 1"	ANSI B1.20.3	VFH1.2525.012	1046	15	VFH1.2525.013	1447	8
1"5/16-12 UN 2B	SAE J 1926-1	VFH1.2533.032	1018	15	VFH1.2533.033	1419	8

VFH1 DN30 - BG 6 - ISO 31.5


F	STANDARD	FEMMINA - FEMALE - MUFFE - FEMELLE			MASCIO - MALE - STECKER - MALE		
		COD. F	Weight (g)	Packaging (pcs.)	COD. M	Weight (g)	Packaging (pcs.)
BSP 1 1/4"	DIN 3852-2-X	VFH1.3031.002	1720	6	VFH1.3031.003	2390	6
NPT 1 1/4"	ANSI B1.20.3	VFH1.3031.012	1740	6	VFH1.3031.013	2410	6

VFH1 DN39 - BG 7 - ISO 40


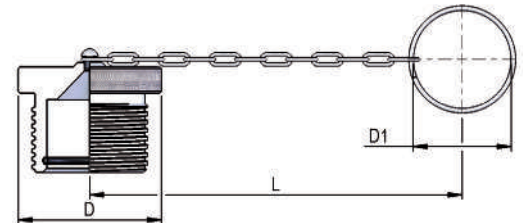
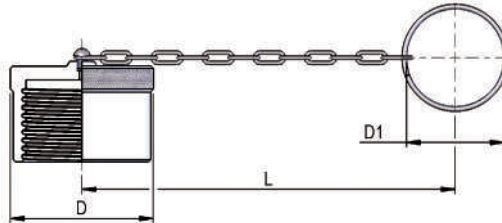
F	STANDARD	FEMMINA - FEMALE - MUFFE - FEMELLE			MASCIO - MALE - STECKER - MALE		
		COD. F	Weight (g)	Packaging (pcs.)	COD. M	Weight (g)	Packaging (pcs.)
BSP 1"½	DIN 3852-2-X	VFH1.3939.002	3000	6	VFH1.3939.003	3975	4
NPT 1"½	ANSI B1.20.3	VFH1.3939.012	3020	6	VFH1.3939.013	4000	4

VFH1 DN50 - BG 8 - ISO 50


F	STANDARD	FEMMINA - FEMALE - MUFFE - FEMELLE			MASCIO - MALE - STECKER - MALE		
		COD. F	Weight (g)	Packaging (pcs.)	COD. M	Weight (g)	Packaging (pcs.)
BSP 2"	DIN 3852-2-X	VFH1.5051.002	5410	2	VFH1.5051.003	7820	2
NPT 2"	ANSI B1.20.3	VFH1.5051.012	5570	2	VFH1.5051.013	7935	2

METAL CAPS

NOMINAL SIZE			FEMALE DUST PLUG				MALE DUST CAP				MATERIAL		
DNP	BG	ISO	COD. F	Dimensions			Weight (g)	COD. M	Dimensions			Weight (g)	
				D	L	D1			D	L	D1		
20	4	19	SVFH.20202	56	270	45	158	SVFH.20203	50	270	45	140	Aluminum
25	5	25	SVFH.25202	70	270	48	212	SVFH.25203	69.5	270	48	247	Aluminum
30	6	31.5	SVFH.30202	80.5	270	49	314	SVFH.30203	75.5	270	49	389	Aluminum
39	7	40	SVFH.39202	96	280	48	503	SVFH.39203	95.5	280	48	694	Aluminum
50	8	50	SVFH.50202	120	380	86	839	SVFH.50203	114	380	86	1026	Aluminum


SPARE PARTS


NOMINAL SIZE			FEMALE GASKET	
DNP	BG	ISO	OR (NBR*)	BK (PTFE)
20	4	19	PPV.325.030	VFH.019.130
25	5	25	PVV.025.121 (2)	VFH.025.130 (2)
30	6	31.5	VFH.030.120	VFH.030.130
39	7	40	VFH.039.120	VFH.039.130
50	8	50	VFH.050.120	VFH.050.130

*AL CODICE DELLA GUARNIZIONE IN NBR AGGIUNGERE 'E' PER EPDM O 'V' PER VITON

*TO THE NBR GASKET CODE ADD 'E' FOR EPDM OR 'V' FOR VITON

*ZU DER ARTIKELNR. DER NBR DICHTUNG GEBEN SIE 'E' FUER EPDM ODER 'V' FUER VITON AN

*AU CODE DU JOINT EN NBR JOINDRE 'E' POUR EPDM OU 'V' POUR VITON